

SOMEONE MAY FIND THESE SOON
IF YOU SPOT ANY OF THE POTENTIAL VISITORS, LET
US KNOW AT INFO@PENSFORDFIELD.CO.UK

Small Tortoiseshell

Once very common, but now scarce. It flies throughout the season with low points in June and September. Breeds on nettles and buddleia.



Clouded Yellow

Has years of great abundance, but generally very rare.



Orange Tip

Common in the neighbourhood and flies in April and May. (Females lack the orange wingtips and can be confused with green veined white, but the underside is completely different.)



Green Hairstreak

Working its way into London from the countryside. Flies very fast and is very well camouflaged, so it is difficult to spot. April to mid-June.



Small Copper

Also working its way into London, Difficult to find. Look around blackthorn in August and early September.



SOMEONE MAY FIND THESE SOON
IF YOU SPOT ANY OF THE POTENTIAL VISITORS, LET
US KNOW AT INFO@PENSFORDFIELD.CO.UK

Brown Argus

Becoming more common in London. Flies in the same places and at more or less the same times of year as the Common Blue. It is very difficult to tell apart from the female Common Blue. The under wing spotting is different and there is no hint of blue on the upperwings round the body.



Marbled White

A likely visitor soon. Found in flowery grass in June and July.



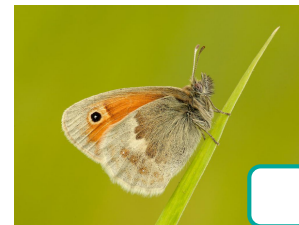
Ringlet

A common butterfly. But conditions in Pensford Field are not ideal for it. Flies from mid-June to end-July.



Small Heath

Common in Richmond Park and a likely visitor. Most likely to be found in late May and June, and in August and September, in flowery grass.



PENSFORD FIELD

A BUTTERFLY HAVEN

With thanks to Butterfly Conservation for kindly giving permission to use their images in this leaflet.

“There’s only Cabbage Whites around here!” That’s what a lot of people think, but it’s not true. In our own Pensford Field, small though it is, 16 different species have been found. Only 3 of them were mainly white. It’s likely more will visit – maybe as many as 9.

Butterflies normally only fly in warm weather (over 12°C) when there’s plenty of sunshine, mainly between April and September, but sometimes in March and as late as November if weather conditions are good enough.

Finding them, even only the 16, is not always quite as easy as it might look. Some are difficult to spot, and some appear only infrequently. Some species can be hard to tell from others, undersides are often different from uppersides, and in some cases males look different from females.

Look at our pictures of them. How many can you find?

Would you like to know more about butterflies? Butterfly Conservation is the UK charity dedicated to saving butterflies and moths, which are key indicators of the health of our environment. Go to www.butterfly-conservation.org and follow on Twitter and Instagram @savebutterflies

ONES WE HAVE ALREADY SPOTTED
TICK OFF AS YOU FIND THEM!

Red Admiral

Can appear all through the season, particularly keen on flowers of buddleia and ivy



Painted Lady

Has years of great abundance, but mostly scarce. Likes buddleia and thistles. Late May to end August



Peacock

Common, but only in ones or twos. Breeds on nettles and likes buddleia. Easiest seen in April/ May and late July/ August.



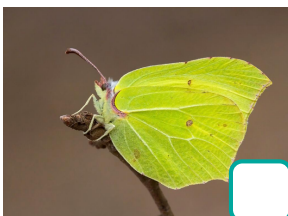
Comma

Like the Peacock, but can be found all season.



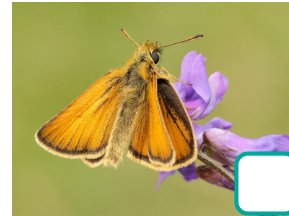
Brimstone

A common visitor, easily seen when present (Females are cream-coloured.) Most frequently seen in April, May and July.



Small Skipper/ Essex Skipper

Look more like moths than butterflies, almost identical; the only sure way to tell the difference is by the tips of the antennae. In the Essex, these are black at the end only, as if dipped in black ink. Any other combination of black and orange/ brown is a small skipper. Look low down in open areas from mid-June to early August.



Large Skipper

Very similar to the Small/ Essex Skipper, but slightly larger and has rather faint orange patches on both the upperside and the underside. Look along the edges of the open area, late May to mid-August.



Common Blue

Found low in flowery grass, most commonly between late May and mid-June and from late July to early September. (Females have brown upperwings with orange spots around the edge.)



Holly Blue

Common and easy to see [the females have black wingtips]. Generally flies at least 4 feet above ground level. Early April to mid-September, with a dip in numbers in June.



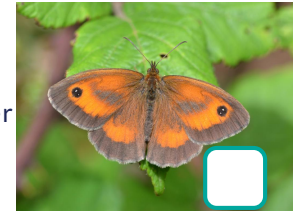
Large White/Small White/ Green-Veined White

What people call 'Cabbage Whites' though the Green-Veined is not interested in cabbages. The black markings are slightly different on the different species. All three have spring and summer generations, with slight differences between the generations and between the males and females, but easy to tell apart with practice. Note that size is not conclusive. The largest Small Whites can be larger than the smallest Large Whites. They fly all season, with Large and Small usually lasting into October.



Gatekeeper

Found low down in open area in July and August. (Females are a little larger than males.)



Meadow Brown

Very common. Found in flowery grass from May to late September. The markings may differ slightly from the illustrations (and are different as between males and females. Females are little larger).



Speckled Wood

Look in the trees. Flies all season.

